



SARM Associates Limited

Profile - 2025

Consulting, Engineers, Architects & Planners

Message From Managing Director



miah muhammad quayyum

SARM Associates Limited, Established In 1968 Is A Reputed Registered Multidisciplinary Engineering Consulting Firm In Bangladesh. SARM Provides A Wide Range Of Services From Initial Conceptual Planning Through To Project Completion And Handover Including Field Surveys And Preliminary Engineering Designs; Architectural Planning And Design; Pre-Feasibility And Feasibility Studies; Detailed Engineering Designs And Drawings; Preparation Of Contract Documents; Tender Evaluations, Contract Award Services; Project Management And Construction Supervision Services. Types Of Projects For Which The Firm Has Developed Extensive Capabilities And Experience Include Roads, Highways, Expressway, Bridges, & Flyover Development, Flood Control, Irrigation And Drainage, Town Protection And River Training, Water Supply And Wastewater Management, Urban Development Planning, Agro-Socio-Economic Studies, Environmental Studies, Buildings, Management, Training And Advisory Services. The Firm Is On The List Of Consultants With ADB, IDA, UNDP, JBIC, KFAED, FAO, US-AID, IFAD, IDB, DFID, ILO, DANIDA & NORDIC. In A Number Of Internationally Financed Projects, SARM Has Been Associated With Foreign Reputed Consulting Firms From USA, UK, France, Australia, Japan, Denmark, Netherlands, New Zealand, Kuwait, Finland, Germany, India And Afghanistan.

Other Than Me Four Directors Constitute The Top Management. They Are Assisted By Heads Of Various Project Groups. All Of Them Have Considerable Experience In Their Respective Fields Of Operation.

Majority Of SARM's Full Time Personnel Include Highly Qualified Experienced Engineers, (Road, Bridge, Civil, Structural Design, Foundation, Soil Material And Quality Control, Quantity Survey), Project Managers, Architects, Planners, Environment & Social Development Specialists, Business Developers, Contract Specialist, CAD Specialist Etc.

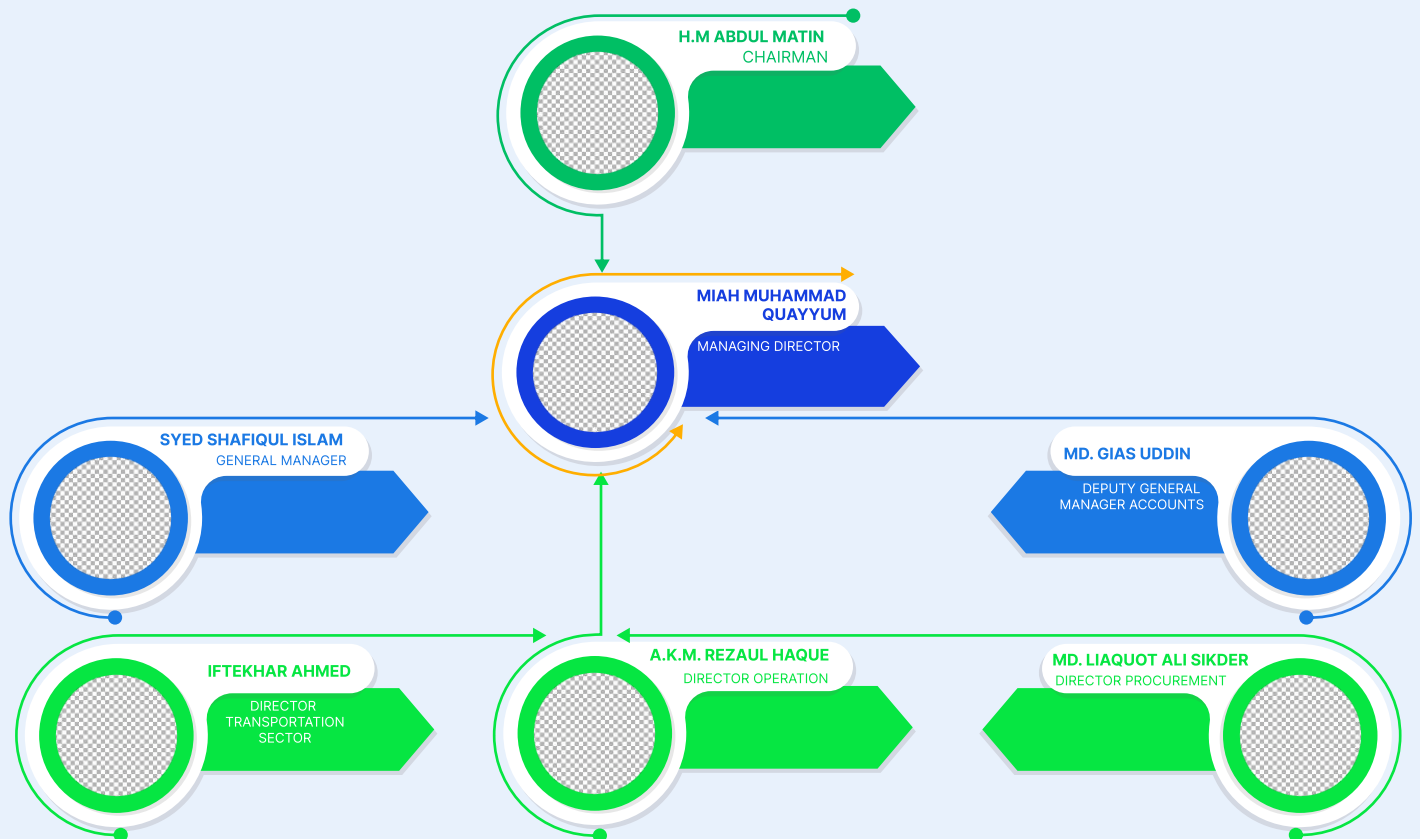
In Addition To The Staff Resources Available Within The Firm, It Retains A Group Of Experienced Individual Consultants In Specialized Fields To Review And Accomplish Certain Aspects Of The Works And To Provide Advisory Services In Their Respective Fields Of Specialization. Such Disciplines Include Environmental Specialist, Training Specialist, Fisheries Specialist, Transport Economist, Economist, Institutional Development Specialist, Sociologist, Management Information Specialists And GIS Specialist Etc.

miah muhammad quayyum

SARM At A Glance
Year Of Establishment 1968
Type Of Organization Private Ltd. Consulting Firm
Years In Business 50+
Registration No. C/388 3581-EP/128 Of 1970-71
Trade License No. TRAD/DSCC/269371/2019 (2021-2022)
Tax Identification No. 110168650637
Vat Registration No. 19011011765
Head Office Dhaka. Country Bangladesh
Website: www.sarm.com.bd

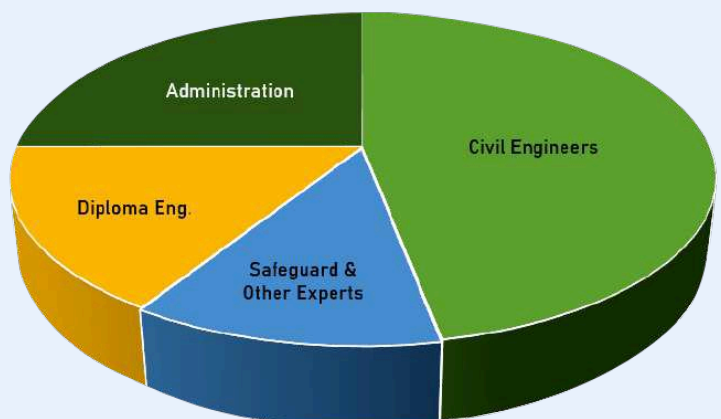
Organization

Organizational Structure



MANAGEMENT CAPABILITY

Majority Of SARM's Full Time Personnel Include Highly Qualified Experienced Engineers, Architects, Planners, Agronomists, Economists And Other Qualified Professionals Covering The Whole Range Of Disciplines In Which The Firm Operates. Firm's Professional Success Is Considered Mainly Due To Competencies, Experience And Qualifications Of Its Experts And Project Personnel As Well As Key Staff Responsible For Co-Ordination And Administrative Support To Comply With The Requirements Determined By The Company's Main Fields Of Activity.



Specialization & Services

SECTORS OF EXPERTISE



TRANSPORTATION

- Urban & Rural Roads
- Highways & Expressways
- Bridges & Flyovers
- Railways & Ports



INFRASTRUCTURE

- Urban & Rural Development
- Industrial & Tourism



WATER

- Water Supply & Sanitation
- Wastewater & Treatment,
- Sewerage & Drainage
- Solid Waste Management



ARCHITECTURE

- Academic & Residential
- Commercial & Multi-Purpose
- Healthcare, & Industrial,
- Recreational & Leisure



WATER RESOURCE & AGRICULTURE

- Irrigation & Drainage
- Flood Control & River Training
- River Bank Protection



ENVIRONMENT & SOCIO-ECONOMY



MANAGEMENT, TRAINING & ADVISORY

PROFESSIONAL SERVICES

- Topographical, Hydrological And Hydrographical Surveys;
- Sub-Soil Investigations For Foundation Design And Soil Surveys;
- Engineering Design, Specification & Cost Estimation;
- Preparation Of Contract Documents & Bid Evaluation;
- Architectural Planning & Design;
- Preparation Of Layout Plans And Master Plans;
- Land Use And Urban Development Planning;
- Transaction Advisory & Pre-Investment Studies;
- Technical Feasibility Studies And Preliminary Engineering;
- Environmental Studies;
- Socio-Economic Studies;
- Traffic Studies And Condition Surveys;
- Project Management; & Construction Supervision.



Road & Highway

43 Km Road Between Fayzabad – Eshkashim, Afghanistan



51 Km Doshi-Pol-E-Khomri Existing Road Rehabilitation, Afghanistan



34 Km Andkhoy – Aquina Road, Afghanistan



50 Km Jabul Saraj-Nijrab Road, Afghanistan



TRANSPORTATION

In Transportation Sector, **SARM** Has Earned Reputation By Working Both At Home And Abroad.



INTERNATIONAL

SARM Has Already Entered Into International Sphere Of Consultancy Services. Recently, SARM Has Been Engaged By The Ministry Of Public Works (MPW) Of Islamic Republic Of Afghanistan For Consultancy Services For Two Prestigious Projects For Preparation Of Detailed Engineering Design And Bidding Documents; Assistance To The Executing Agency During Procurement Process And Award Of Contracts; Project Management And Supervision Of Works During Implementation. The Prestigious Projects Are:

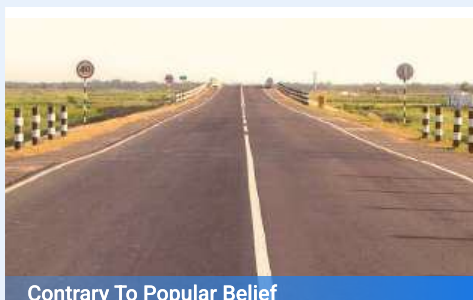
- Supervision Consultancy For Construction Of Road Between Fayzabad – Eshkashim (43 Km) [Fayzabad - Behrak] (ADB Funded)
- 51 Km, Rehabilitation Of Doshi-Pol-E-Khomri Existing Road (IDB Funded)
- 34 Km Long Andkhoy – Aquina Road (IDB Funded)
- Supervision Of 50 Km Jabul Saraj-Nijrab Road Project (ADB Funded)

Road & Highway

DOMESTIC:

SARM Has Provided Consultancy Services For Several Major, Internationally Financed Road Projects Of The Roads And Highways Department Of The Government Of Bangladesh (GOB), Apart From Feasibility And Sector Studies For Rural Road Network Under The Ministry Of LGRD & Cooperatives, DANIDA And ILO. In This Sector, The Firm Has Undertaken Field Surveys, Investigations, Embankment And Pavement Design Of Roads, Preparation Of Estimates, Technical Specifications, Tender Documents And Standard Laboratory Tests Followed By Full Time Supervision Of Construction Works Including Supervision During Maintenance Period. The Major Projects Are:

- **Design Review And Enhancement** Consultancy (DRC) Services For Improvement Of Sylhet – Tamabil – Jaflong Road (N2) To A 4-Lane Highway And Construction Of Service Lane On Both Sides Funded By AIIB;
- **Road Safety Audit Of Jaydevpur-Mymensingh** (N3), Kachpur-Daudkandi And Chittagong- Cox's Bazar (N1), Kashinathpur-Rajshahi (N6) And Dhaka- Aricha (N5) (Total 500 Kilometer) National Highway During The Fiscal Year 2017-2018;
- **Feasibility Study For The Project** “Construction Of Road From Airport Road (Shalbagan Mor) To By-Pass Connection Road And Kapasia Bazar To Sucharan Mor”;
- **Supervision And Management Consultant** For Construction Of 4-Lane Rajapara-Payra Port Connecting Road, Payra Port, Bangladesh (GOB Funded);
- **Feasibility Study And Detailed Design** Of Nabinagar – Shibpur – Radhika Road (18 Km Of R203) Under Brahmanbaria Road Division;



Road & Highway

Contrary To Popular Belief



Contrary To Popular Belief



Contrary To Popular Belief



Contrary To Popular Belief



Contrary To Popular Belief



- **Consulting Services For Construction Supervision** Of Purbachal Link Road From Kanchan Bridge To Progoti Soroni (Kuril) Package No- 01, Under Purbachal New Town Project Of RAJUK;
- **Consultancy Services** For Strengthen Of Link Road From Dhaka Trunk Road To Baizid Bostami Road Including Design Of Loop Road Along The Outer Periphery Of AUW's Land At Chittagong;
- **Providing Consulting Services For Detailed Design,** Supervision And Monitoring For The Construction Of Road, Bridge And Culverts Of Madani Avenue (From Progoti Sarani Intersection To Balu River);
- **Sylhet-Tamabil-Jaflong Road Improvement Project.** (Sylhet Town Bypass With Link To Sylhet-Fenchuganj Road) KFAED Funded;
- **Road Condition Assessment Works** Of RHD Road Network During The Year 2009-2010;

Road & Highway

- **223 Km Long Rehabilitation** Of Dhaka-Sylhet Road; Rehabilitation Of Dhaka- Sylhet Road (IDA Funded);
- **Sylhet-Tamabil-Jaflong Road** (61 Km Long) Improvement Project; (KFAED Funded);
- **Dhaka Urban Transport Project** (DUTP), Dhaka City (IDA Funded);
- **Khulna Bypass Road (17km Long)** Under Rupsa Bridge Construction Project;

223 Km Long



61 Km Long



Dhaka Urban Transport



17km Long



- **61 Km Rehabilitation Of Dhaka-Aricha Highway Project** Including Construction Of 1 New Bridge, Rehabilitation And Repair Of 53 Bridges And 2 Nos. Box Culverts; (DANIDA Financed);
- **Road Rehabilitation And Maintenance Project** (Phase I) Comprising Of Rehabilitation Of 136 Km Of National Highways And Periodic Maintenance Of 110 Km Of Regional Highways; (IDA Financed);

Contrary To Popular Belief



Contrary To Popular Belief



- **Road Rehabilitation And Maintenance Project** (Phase II) Comprising Of 156 Km Of Rehabilitation Of National Highways And Periodic Maintenance Of 60km Of Regional Highways; (IDA Financed);

- **WB - Strengthening Of Pavement** Works Of Feni By Pass Road (29 Km);

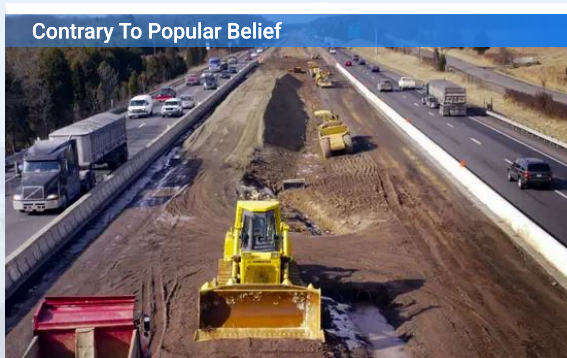
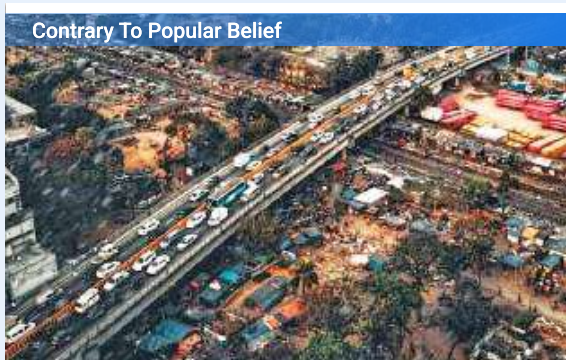
Contrary To Popular Belief



Contrary To Popular Belief

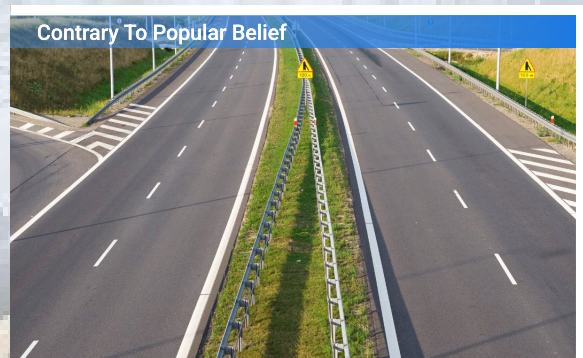


Road & Highway



- **35 Km Khulna Mongla Road Project** (ADB Financed);
- **Pre-Investment Study** Of 204 Km Of Roads Under Second Road Rehabilitation And Maintenance Project (IDA Financed);
- **Road Safety Measures** On National And Regional Roads, All Over Bangladesh; (NDF Funded);
- **Survey And Investigation** Works For 800 Km Of Rural Roads, Including Assessment Of General Conditions Of Road, Road Geometry, Traffic Counts Both On Normal And On Week/Market Days Etc. Funded By DANIDA;

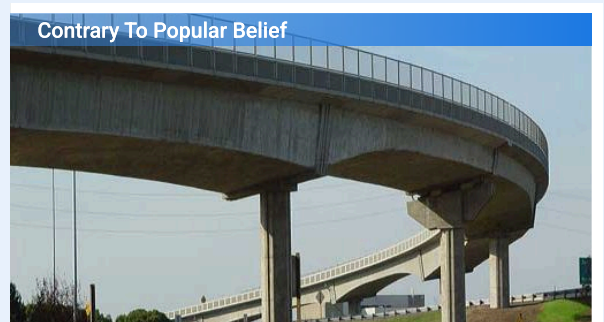
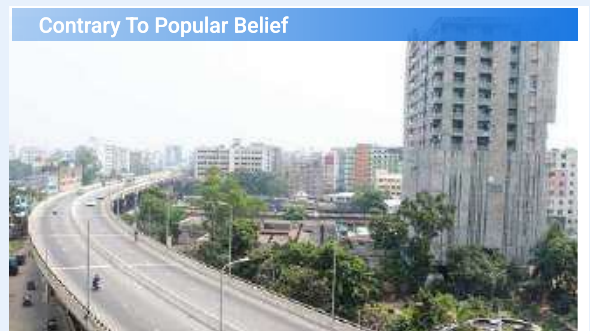
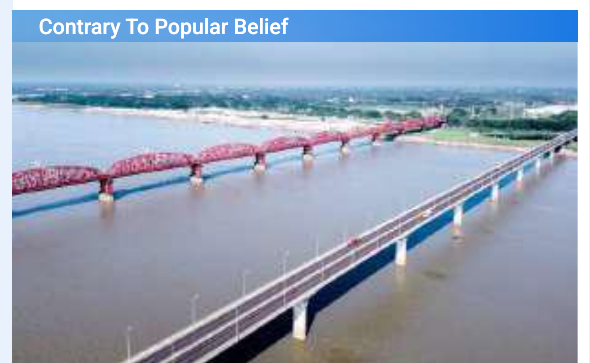
- **ILO: Investigation, Planning And Survey** For Improvement And Upgrading Of 4469 Km Of Road In 15 Upazilas Of Dhaka, Sylhet And Rajshahi Districts;
- **Feasibility Studies** Under Phase I, II & III Of IRWP, Planning Survey And Design Of 93 Km Of Rural Roads In Madarganj And Sharishabari Upazilas Of Jamalpur District, 51 Km Of Rural Roads In Pakundia And Hossainpur Thana Of Mymensingh District And 661 Km Of Rural Road In Raozan And Fatickchari Thana Of Chittagong District.



Bridges & Flyovers

In The Flyover & Bridge Sector, **SARM** Has Undertaken Field Investigations, Site Surveys And Preparation Of Structural Designs Of Bridges And Culverts, Technical Specifications, Estimates And Tender Documents. In The Field Of Construction Supervision & Project Management Of Flyover & Bridges And Culverts As Per Requirement Of The Client. Major Consultancy Services Are Rendered Are:

- **Preparation Of Detail Architectural & Structural Design**, Drawing, Cost Estimate, Bid Document & Permanent Supervision For Construction Of Elevated Expressway From Lalkhan Bazar To Sha-Amanat Airport In Chittagong City
- **04 (Four) Lane Overpass Under The Project** Of “Construction Of Connecting Road From Natore Road (RUET) To Rajshahi By-Pass Road (1st Revised)”
- **Construction Supervision** Of Construction Of Sonahat Bridge Over The River Dudhkumar At Bhurungamari – Sonahat Landport Mothergonj- Bhitorbondh-Nageshwari Road.
- **Preparation Of Detailed Architectural & Structural Design**, Drawing, Cost Estimate, Bid Document And Permanent Supervision For Construction Of Akhtaruzzaman Chowdhury Flyover At Bahaddarhat Junction, Chittagong.
- **Techno Economic Feasibility Study**, Digital Topographical Survey, Sub-Soil Investigation, Detailed Engineering Design, Cost Estimate And Bill Of Quantities (BOQ) For Construction Of RCC 3800m Bridge On Jalburunga River At Achintapur Under Gouripur Upazila, Dist.-Mymensingh.



Bridges & Flyovers

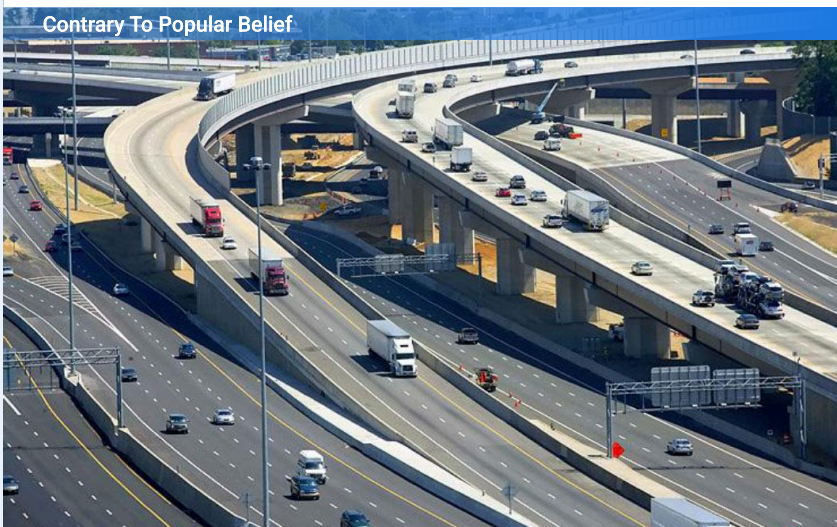
Contrary To Popular Belief



Contrary To Popular Belief



Contrary To Popular Belief



Contrary To Popular Belief



Contrary To Popular Belief

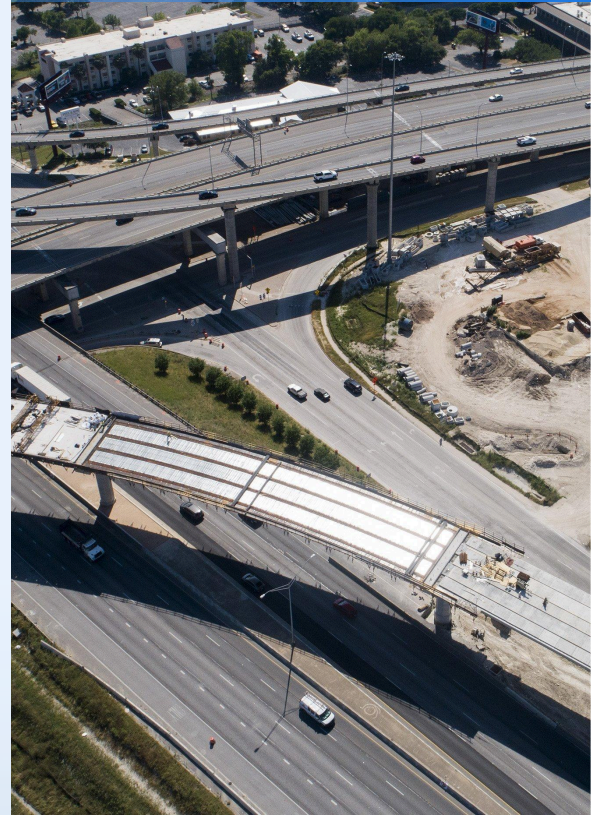


- **Sub-Soil Investigation & Digital Topographical Survey**, Detail Design, Drawing (Draft & Final) And Cost Estimate For 40 (Forty) Bridges With Provision For Hydro-Morphological Study 01 (One) Bridge
- **Design Review, Tender Documentation** And Construction Supervision For Construction Of Shitalakhya Bridge (1290 M) Project (3rd Shitalakhya Bridge Construction Project At Bandar Upazilla, Narayanganj), And 72 Km Road, Bangladesh (Saudi Development Fund)
- **Consultancy Services For An Overpass** Under The Project Of "Construction Of Connecting Road From Natore Road (RUET) To Rajshahi By-Pass Road".
- **GOB Funded Construction Of Flyover** At Muradpur, 2 No. Gate & GEC Junction, Chittagong
- **Supervision Of Construction Work** Of Kadamtali Junction Flyover, Chittagong.

Bridges & Flyovers

- **Consultancy Services** For Construction Of Flyover Bridges In Dhaka [Construction Moghbazar – Mouchak (Combined) Flyover]
- **Preparation Of Detail Structural Design**, Estimate, Technical Specification And Standard Tender Document Of 02(Two) Bridges Under Manikgonj District.
- **Economic Analysis Of Important** 05 (Five) Large Bridges On Netrakona District.
- **Feasibility Study Of 04 Nos Large Bridges** In Jamalpur District. Soil Test, Design & Supervision Of “Construction Of Two Bridges (Each Of 560 M) On Brammaputra River Under Islampur Upazila Of Jamalpur District.”
- **Consultancy Services For Detail Structural Design** Of A) Const Of 217 M. Long Bridge On Nilkuthi-Gotgari Hat-Joth Bazar-Damnash GC (Bagmara) Road At Ch. 3980.00 M Over Atrai River. (ID No. 164472014), B) Const Of 125 M. Long Bridge On Hazi Gobindapur R&H Cheragpur-Bottoli GC (Niamotpur) Road At Ch. 5200.00m Over Shibo River. (ID No. 164472009), C) Const Of 297 M. Long Bridge On Over The River Kaliganga At Bethua In Manikgonj Sadar Pourashava.

Contrary To Popular Belief



Contrary To Popular Belief



Contrary To Popular Belief



Contrary To Popular Belief



Contrary To Popular Belief

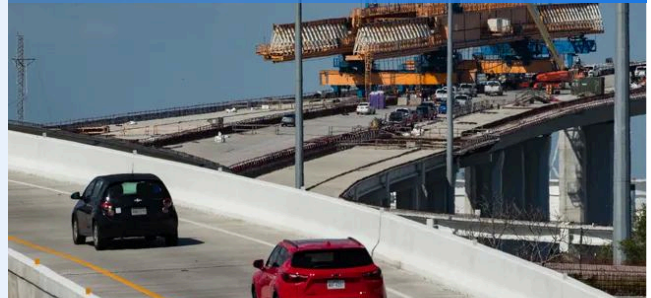


Bridges & Flyovers

Contrary To Popular Belief



Contrary To Popular Belief



Contrary To Popular Belief



Contrary To Popular Belief



Contrary To Popular Belief



- **Feasibility Study For Construction Of Bridge** At Ferry Location At 17th Km. On Kachua- Betagi-Patuakhali- Lohalia-Kalaya Road (Z8052).

- **Consultancy Services Feasibility** Study And Preliminary Design For A) Construction Of Bridge At Ferry Location At 70th Km On Labukhali – Dumki – Boga – Dashmina – Golachipa – Amragachi Road (Z8806); (Length: 1600 M) (B) Construction Of Bridge At Ferry Location At 53rd Km On Barishal – Jhalokhati – Bhandaria – Perojpur Road (R870) Over The River Kocha; (Length: 2000 M) And (C) Construction Of Bridge At Ferry Location At 8th Km. On Rahmatpur – Babugonj – Muladia – Hizlakok Road (Z8034) Under BBA" (Length: 1800 M) Under Bangladesh Bridge Authority.

- **Construction Supervision** Of 864.21 M Length Of Mohakhali Flyover Under Dhaka Urban Transport Project (DUTP), Dhaka Transport Co-Ordination Board (DTCB) (IDA Financed)

- **Detailed Architectural & Structural Design,** Drawing, Cost Estimate, Bid Document And Permanent Supervision For Construction Of Flyover At Bahaddarhat Junction, Chittagong. GOB Funded)

- **Detailed Design For Railway Overpass** And Road Connecting Between Bijoy Sharani And Tejgaon Industrial Area, Dhaka Of Rajdhani Unnayan Karttripakkha (RAJUK).

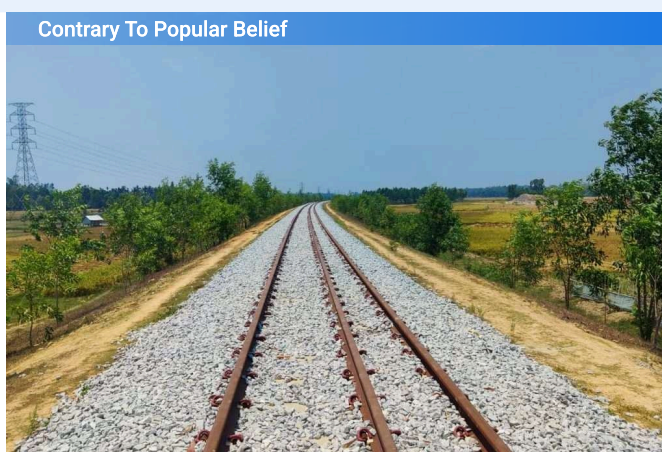
Railways

In The Railway Development Sector, SARM Has Been Associated With Bangladesh Railway For Planning And Design Of Construction Works Since 1979-80. Major Projects In The Railway Sector Are:

Contrary To Popular Belief

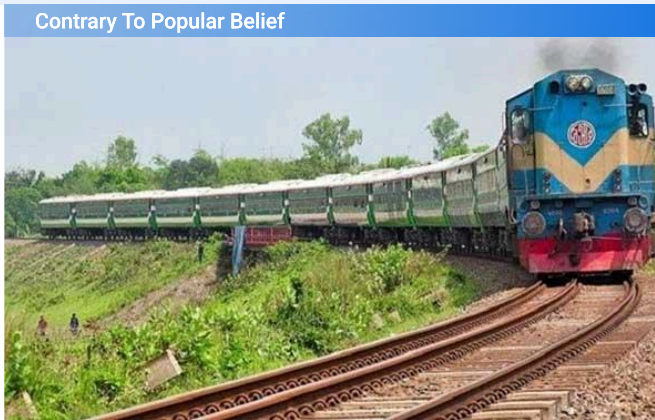


Contrary To Popular Belief



- **Construction Supervision Consultancy Services** For Padma Multi Purpose Bridge (PMPB) Railway Link Under Bangladesh Army.
- **Consultancy Services For In-Depth Monitoring** Of Rehabilitation Of Kalukhali-Bhatiapara Section And Construction Of Kashiani-Gopalganj- Tungipara New Rail Line Project.
- **Feasibility Study For Conversion/ Construction** Of Dhaka Chittagong Railway Line Into Double Track With Electric Traction Under Bangladesh Railway

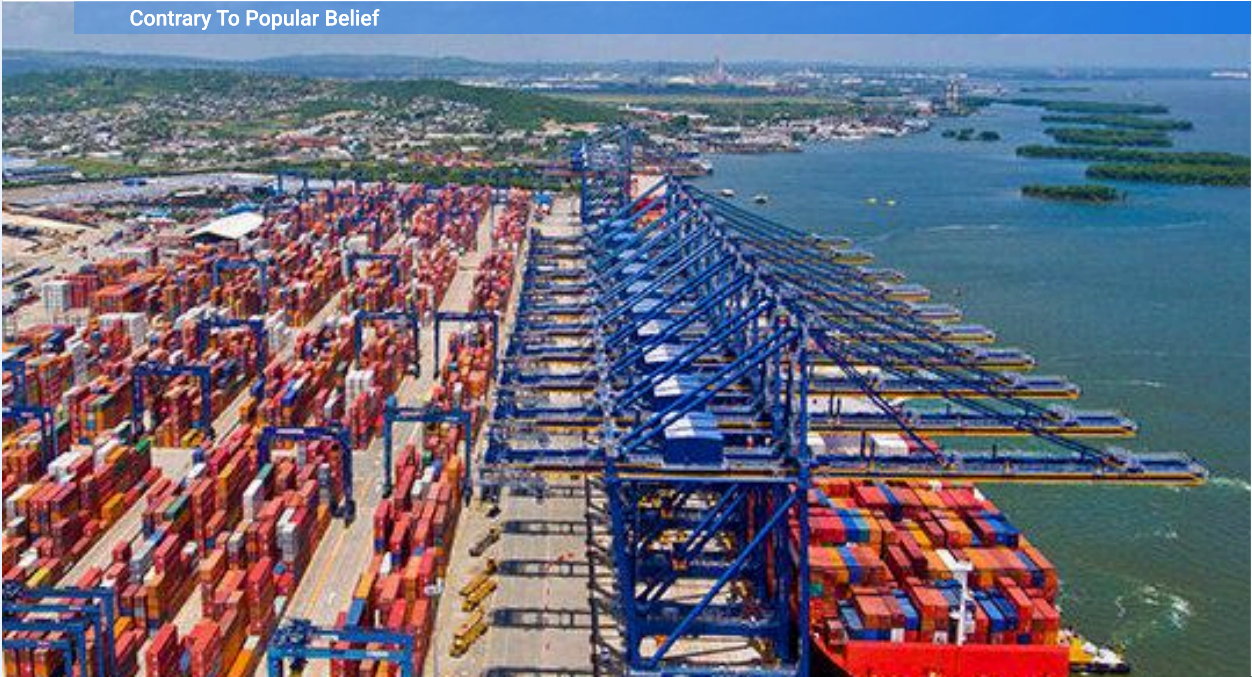
Contrary To Popular Belief



Contrary To Popular Belief



Contrary To Popular Belief

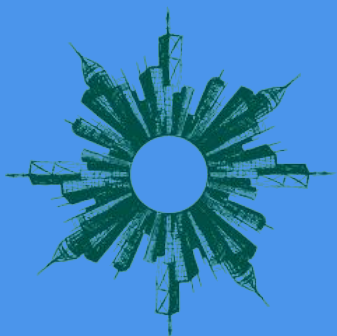


- **Construction Of Port** Facilities In Order To Prevent Unauthorized Encroachment Of The Buriganga River And Its Foreshore Land Of BIWTA.
- **Consultancy Services** For Shifting & Re-Construction Of The Service Jetty Located Near Dock Office Of The Up-Stream Of Jetty No. 1 Within Chittagong Port Restricted Area.

Contrary To Popular Belief



Infrastructure



Under This Sector The Works Undertaken By SARM Covers All The Major Aspects Detailed To Urban, Rural & Industrial Infrastructures Development. Works Done Include Detailed Existing Land Use Survey Including Topographical And Flood Characteristics Of The Area, Collection Of Socioeconomic And Demographic Data, Determination Of Study Area Based On Future Potential Development, Detailed Plan For Development Of Urban Areas Identifying Suitable Locations Of Respective Zones, Circulation Network, Social Services And Determination Of Future Land Requirements Depending On The Projected Size Of Population And Physical Development Patterns. Major Projects In This Sector Are:

- **Second Urban Governance & Infrastructure** Improvement Sector Project (UGIIP-II) Of LGED Funded By ADB, KfW, GIZ & GoB.
- **Detailed Landscaping Design**, Estimate & Feasibility Study For The Preparation Of Beautification And Modernization Of Shahid Captain Monsur Ali Park At Rajshahi.
- **Construction Of Port Facilities** In Order To Prevent Unauthorized Encroachment Of The Buriganga River And Its Foreshore Land Of BIWTA.
- **Planning And Designing** Of Various Infrastructure And Utility Plans And Components With Ancillary Works For Purbachal New Town Project Of RAJUK.
- **Preparation Of Master Plan** For Nilphamari Pourashava.
- **Land-Use Plan For Netrokona Zila Shahar**, Madan And Mohanganj Upzila Shahars, Gaibandha Zila Shahar And 3 Upazilas In Gaibandha And 5 Upazilas In Jessore Districts.

Contrary To Popular Belief



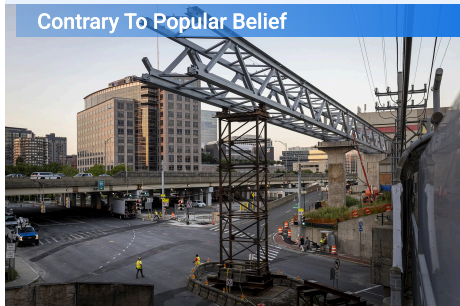
Contrary To Popular Belief



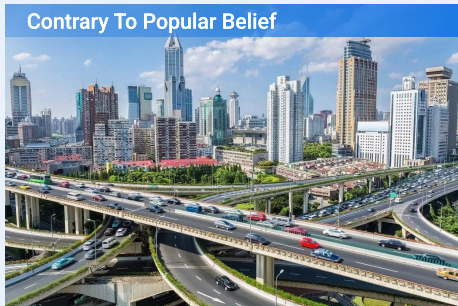
Contrary To Popular Belief



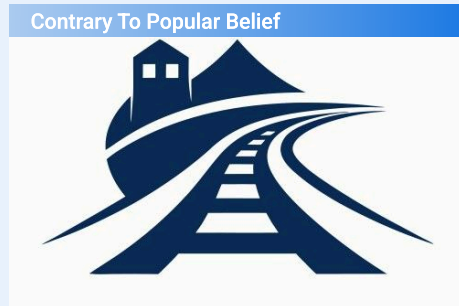
Contrary To Popular Belief



Contrary To Popular Belief

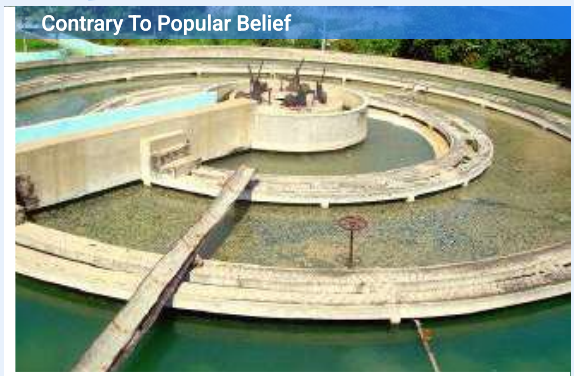


Contrary To Popular Belief



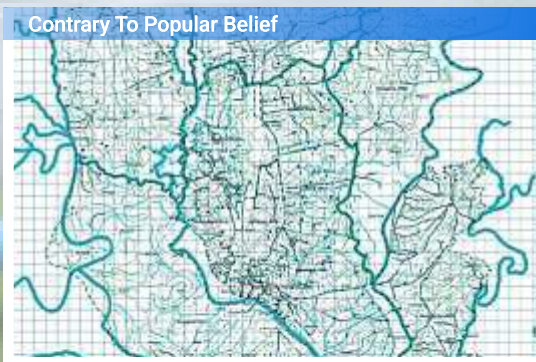
In The Water Supply Sector, SARM Has Undertaken Design And Full Time Construction Supervision Of Intake Works And Raw Water Pump Station, Desilting Basin, Clarifier, Rapid Mixer, Filter, Clear Well, High Lift Pump Station, Chemical Building, Iron Removal Plant, Trunk Pipe Lines, Storage Reservoir And Booster Pump Stations. SARM Has Also Been Involved In Preparation Of Technical Specifications, Tender Documents, Bid Evaluation, Commissioning Of Water Supply Components And Maintenance Supervision.

- **Management Design And Supervision Consultants (MDSC)**, Dhaka Environmentally Sustainable Water Supply Project (DESWSP) Under Dhaka Water Supply And Sewerage Authority (DWASA) Funded By ADB, AFD, EIB & GoB



- **Updating/Preparation Of The Storm Water Drainage Master Plan For Dhaka City (Package S-3)**, Under Dhaka Water Supply And Sewerage Authority (DWASA)

- **Mathematical Modelling And Detail Survey** For Safe Drinking Water Source Under Project Of Ground Water Management And TPP For Survey Investigation And Feasibility Study In Upazila And Growth Center Level Pourashava Having Piped Water Supply System Under DPHE



- **Construction Of Intake And Connecting Pipeline** Between Intake & Raw Water Pump Station Under BMRE Of Chandnighat Water Treatment Plant At Dhaka.

Water

- **50 Mgd Water Supply Project**
Under Crash Programme For Dhaka City.

Contrary To Popular Belief



Contrary To Popular Belief



- **IDA Financed** 40 MGD Second Chittagong Water Supply Project.

- **Feasibility Study** For Fresh Water Supply To Chalna Permanent Port.

Contrary To Popular Belief



SARM Has Considerable Experience In The Field Of Planning, Designing And Construction Supervision Of Drainage, Waste Water And Sewerage Disposal System. The Following Projects Undertaken By SARM Involve Comprehensive Waste Water And Sewage Disposal Schemes:

- Chittagong Chemical Complex At Barabkund, Chittagong.
- Kumudini Pharmaceutical Plant Complex At Narayanganj.
- Khulna University Academic Building At Khulna.
- Dock Workers Housing Complex At Chittagong.
- Second Forestry Project At Sylhet And Chittagong.



Contrary To Popular Belief



Contrary To Popular Belief



Contrary To Popular Belief



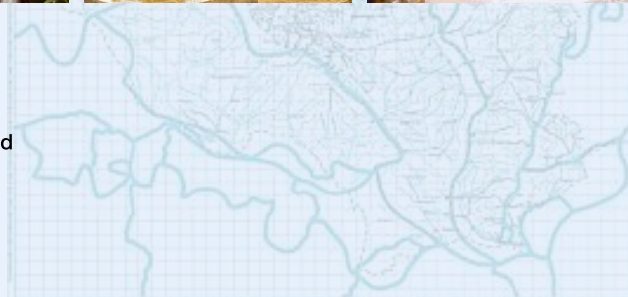
Contrary To Popular Belief



Contrary To Popular Belief



- Lever Brothers Factory Complex At Chittagong.
- Low-Cost Housing Sub-Project Under Urban Area Development And
- Environmental Improvement Project, Chittagong.
- Office And Housing Complex Of Jalalabad Gas
- Transmission And Distribution System Ltd At Habiganj.



Contrary To Popular Belief



Contrary To Popular Belief



Contrary To Popular Belief



Contrary To Popular Belief



Contrary To Popular Belief



Land Configuration Aesthetic, Environment, Climate And Study Of Inter Relationship Of Planning Parameters, Architectural Design Detailing, Structural, Plumbing, And Electrical Design And Supervision Of Construction Are The Prime Consultancy Services Rendered By SARM For Shopping Centers, Offices, Apartments, Academic, Hostel And Factory Buildings, Staff Housing, Pharmaceutical Plant And Other Infrastructures. Major Projects Are:

- **Consultancy For Detailed Digital Survey** And Feasibility Study For Construction Of 11nos Multi-Storied Residential Buildings At Gulshan, Mohammadpur, Lalmatia And Dhanmondi Area In Dhaka City Under RAJUK.

Contrary To Popular Belief



Contrary To Popular Belief



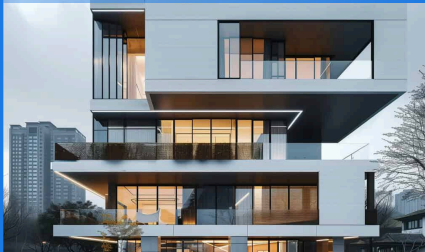
- **Detailed Digital Survey And Feasibility Study** Of 33 (Thirty Three) Nos. Multistoried Building In Different Sizes Of Plots At Gulshan Residential Area Under RAJUK.

- **Construction Of (I) Vice Chancellor's** Residence-Cum-Office; (Ii) Residential Buildings For Assistant Professors & Officers Of Equal Rank; (Iii) Class III Employees Residence & (Iv) Class IV Employees Residence And V) Lecturers Residence Under Khulna University.

Contrary To Popular Belief



Contrary To Popular Belief



- **Acoustic Work With Seat Arrangement** And Air Conditioning System Of Habiganj Auditorium.

- **Construction Of Kumudini** Pharmaceutical Plant At Narayanganj, Dhaka.

Contrary To Popular Belief



Architecture

- **Jamiatul Fallah Shopping-Cum-Office** Complex At Chittagong.
- **Construction Of Planning** & Architecture Faculty Building Of Khulna University.
- **Construction Of Administrative Building** Under Mawlana Bhasani Science & Technology University At Santosh, Tangail.
- **Construction Works Of Different** Components Of Chittagong Chemical Complex.
- **5 Storied Bangladesh Bank** Building At Rajshahi.

Contrary To Popular Belief



Contrary To Popular Belief



Contrary To Popular Belief



Contrary To Popular Belief



Contrary To Popular Belief



Architecture

Contrary To Popular Belief



Contrary To Popular Belief



Contrary To Popular Belief

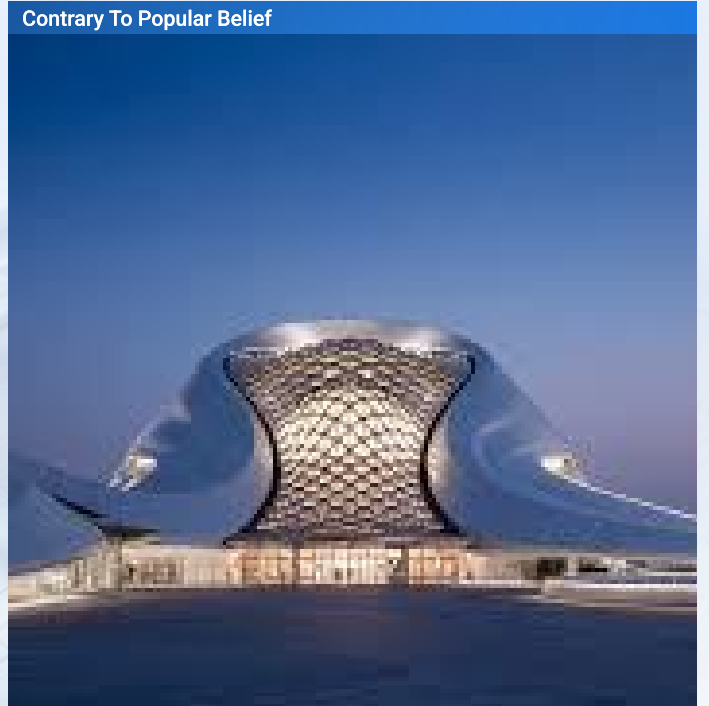


Contrary To Popular Belief



- **Construction Of Office** And Housing Complex Of Jalalabad Gas Transmission And Distribution System Ltd. At Habiganj.
- **Second Forestry Project** (UNDP-FAO Project No. BGD/79/017).
- **Dock Workers Housing Complex** At Chittagong.
- **Jamiatul Fallah Islamic Centre** & Mosque Complex At Chittagong.
- **Architectural Planning, Engineering** Design And Documentation Of 10 Storied Administrative Building Of Bangladesh Railway At Kamlapur, Dhaka.

Contrary To Popular Belief



Water Resource & Agriculture

Water Resources Projects Undertaken By SARM Include Feasibility Studies Of Irrigation, Flood Control And Drainage Projects, Design Of Hydraulic Structures, Pump Stations, River Training And Town Protection Works. Services Rendered Include Reconnaissance Surveys, Topographic Surveys, Hydrological Surveys, Analysis Of Hydrological And Climatic Data, Sub-Soil Investigations, Other Field Investigations, Agro- Socio-Economic And Environmental Studies, Compilation And Analysis Of Data, Preliminary Design And Planning, Study Of Alternatives, Economic Evaluation And Cost- Benefit Analysis, Detailed Engineering Design And Drawings, Cost Estimates, Preparation Of Technical Specification, Tender Documents And Operation Manuals. Completed Works Under This Sector Include:

- **Studies Under Fourth Flood Control & Drainage** Project.
- **Benchmark Survey** For FCD-III Project.
- **Evaluation Studies** Of Karnafuli Irrigation Project.

Contrary To Popular Belief



- **Identification Survey** For Minor Irrigation & Drainage Works In Feni District Under NRD-II Project.

- **North Eastern Rivers Flooding** Pre-Feasibility Study In Sylhet Region;

Contrary To Popular Belief



Contrary To Popular Belief



Contrary To Popular Belief



Contrary To Popular Belief



Water Resource & Agriculture

Contrary To Popular Belief



- **Feasibility Report, Design** And Estimate For Water Control And Irrigation Schemes In Faridpur District.
- **Protection Of Habiganj**, Sunamganj And Rangamati Towns.

Contrary To Popular Belief



- **River Training Works** Of Sangu River At Dohazari And Matamuhuri River.
- **Revision And Up-Dating** Of Feasibility Studies Of Khowai River Project And Upper Kushiara Project.

Contrary To Popular Belief



Contrary To Popular Belief



Environment & Socio-Economy

Environmental Impact Assessment Has Become One Of The Important Factors In Current Planning Studies. SARM's Services Comprise All Aspects Of Environmental Engineering And Planning. In A Number Of Assignments The Firm Has Been Responsible For Assessment And Evaluation Of Positive Or Negative Impacts On The Existing Natural Environment That The Construction Of The Projects Will Have In The Natural Habitat, Agriculture, Flora And Fauna, Hydrological System, Pollution Hazards, Navigation, Road Network And Drainage Structures Etc.

In The Field Of Socio-Economic Studies, SARM's Related Technical Man-Power Are Well Conversant With Various Stages Of Conceptualization And Implementation Of Data- Based Field Research Including Preparation, Pretesting And Finalization Of Questionnaire, Training Of Staff Conducting The Field Surveys, Sampling Of Villages, Pre- Census Of Households, Data Collection From Primary And Secondary Sources, Data Processing And Analysis, Tabulation And Preparation Of Reports. Completed Works Under This Sector Include:

- **In-Depth Monitoring Of The Project**

“Bangladesh Weather And Climate Services Regional Project (BWCSR) Component-B: Strengthening Hydrological Information Services And Early Warning Systems (SHISEWS) (1st Revised)”

- **Re-Settlement Plan & Socio-Economic Survey**

Of Project Affected Peoples (PAPs) Of The By-Passes And Re-Alignment Under Second Road Rehabilitation And Maintenance Project.

- **Benchmark Socio-Economic Survey Under**

FCD-IV Project And FCD-III Project.

- **Basic Study On The Present Situation**

Of The Previous Grant Aid Project For The Bridges In Bangladesh

- **Socio-Economic Survey**

For Evaluation Studies Of Karnafuli Irrigation Project.

- **Shaheednagar Socio-Economic Survey**

For Housing Development.



- **Preparation Of Feasibility Studies**

Under Phase I, II & III Of 100 Thana Intensive Rural Work Programme.

- **South West Rural Development Project**

(RWP Component)

- **Analysis Of Benchmark Survey**

Data Under Extension Research Project In North Western Region Of Bangladesh.

- **Integrated Agricultural Development**

Project In Kushtia, Jessore And Northern Faridpur District.

- **Benchmark Survey On Coconut And Study**

Of The Assessment Of Credit Requirement For Coconut Cultivation.

- **Study On Land Mortgaged**

To Private Money-Lenders In 3 Thanas Of Noakhali District.

- **Survey Of Farmer's Attitude**

Towards HYV/Improved Cereal Seeds In 6 Thanas Of Khulna Division.



Quality Control & Support Services

QUALITY CONTROL:

SARM Has The Highest Standard Policies, Procedures And Practices In Place That Promote Total Quality Management Which Has, Over The Years, Resulted In Clients' Satisfaction' Steady Confidence In Our Corporate Performance And Stable Cooperation Between Us And Our Various Host Communities Across The World. SARM Approved Documents And Guidelines For TOTAL MANAGEMENT QUALITY Throughout The Projects Lifecycles Include, But Not Limited To, The Following:

- Project Safety Plans,
- Corporate Quality Compliance Statement,
- Project-Specific Quality Control And
- Quality Assurance Manuals,
- Project Audit Procedure Manual,
- Corporate
- Engineering Procedures Manual,
- Procedures For Quality Plan Preparation, Design Control And Internal Audit.



IN ADDITION, SARM

Has Standardized Forms And Checklists For Performing Project Assessment And Evaluation Compliance To Technical Standards, Environmental And Social Requirements As Reflected In Our Adopted "Code Of Ethics" And Environmental Policy. Other Documents Include Client Concern Registration Form, Client Comments And Project Performance Evaluation Form And Client Feedback Form, Among Others.

SUPPORT SERVICES:

The Firm Owns Modern In-House Computers, CADD, Plain Paper Copiers And Printing Machines To Cope With Word Processing, Engineering Design And Printing Needs. SARM Maintains A Fullfledged Architectural, Structural, Electrical And Mechanical Section Equipped With Latest Drafting Facilities. SARM Also Owns Total Station, Survey Equipment And Licensed Original Engineering & Office Software For Undertaking All Engineering & Day To Day Office Works.

SARM ASSOCIATES LIMITED

CONSULTING, ENGINEERS, ARCHITECTS & PLANNERS



114/1, Moddho Pirerbag Mirpur,
Dhaka-1216, Bangladesh



+8802-44809002-3



info@sarm.com.bd



www.sarm.com.bd



discover more about us...

